




## Landowner & Citizen Information on Groundwater Seminar

April 1, 2004


© Susan Butler



## Groundwater: Part of San Antonio's Integrated Water Resources Program

**Susan Butler**  
Director of Water  
Resources

Becoming the Best by 2006




## Background

- Our City's water picture has changed dramatically since 1994.
- Edwards Aquifer withdrawals are managed by the EAA
- City Council unanimously approved a long-term water plan in 1998.
- Pumping History
 

1982 – 191,000 AF	2003 – 168,906 AF
2001 – 178,386 AF	
2002 – 161,702 AF	
- SAWS permit from the EAA is now in effect (159,040 ac/ft/yr.)


© Susan Butler



## Public Process Background

- SAWS Long-Range Plan is community driven
- Criteria used in evaluating potential water supplies
  1. Trust and Credibility
  2. Community Unity
  3. Availability and Reliability
  4. Economic Opportunity
  5. Environment and Sustainability
  6. Efficiency and Affordability
  7. Governance and Control
  8. Fairness and Equity
- Our Long-Range Plan is consistent with Regional and State Plans

© Susan Butler



## Public Process Background

Public Input Process


Water Resource Plan Implementation

Citizens Advisory Panel  
"Water Resource Plan"

Citizens Working Group  
"Benchmarks Strategies"

Citizens Committee On Water Policy  
"Framework for Progress"

© Susan Butler



## Conservation

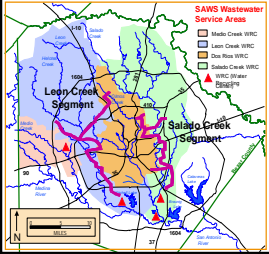
- Reduced consumption from 225 gpcd in 1982 to 138 gpcd
- Programs for education, plumbing and landscape retrofits, conservation pricing and leak detection
- Commercial conservation program with commercial fee
- \$7 million invested annually

Approx. 138 Gallons Per Person Per Day  
Goal – 132 Gallons Per Person Per Day by 2006

© Susan Butler

## Recycled Water Project


- Project to supply 35,000 acre-feet per yr
- Replaces current uses of potable water
  - Irrigation
  - Heating and Cooling towers
  - River flow
- 25,000 ac/ft committed
- Over 13,000 acre-ft currently online
- Total Cost: \$125m
  - Phase I



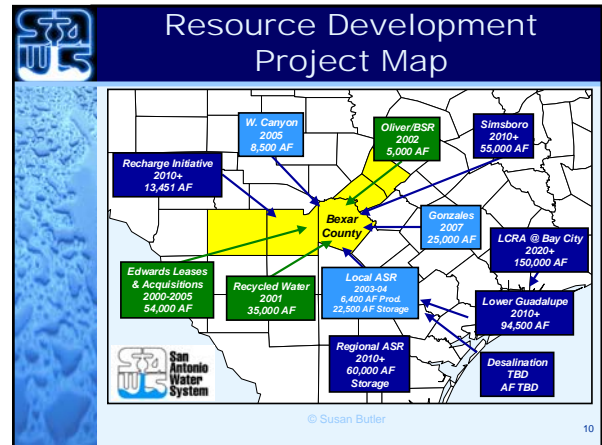
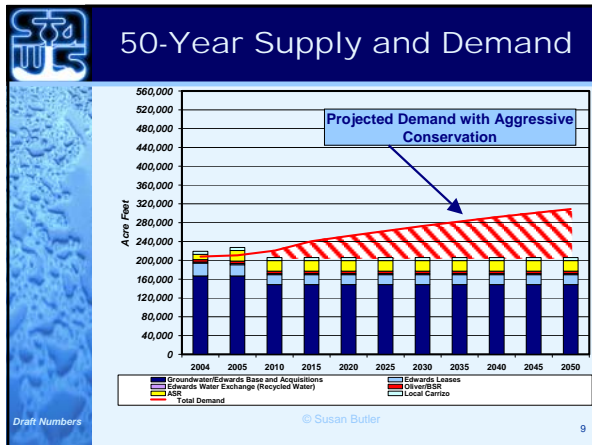
© Susan Butler 7

## Aquifer Storage & Recovery

- Long-term storage ability
  - (Approx. 22,500 ac/ft)
  - Able to produce Carrizo groundwater during periods of drought.
- Project includes
  - 30 miles of 60" pipe
  - Water treatment facility
- 14 month construction timeline
- Total cost of \$215,000,000
- Current schedule of completion, March 2004



© Susan Butler 8



## Guiding Principles

- Diverse sources of supply reduce stress on resources
- "Sustainable" or "firm" yield supplies
- Cultural, social and economic effects on local area a priority
- Projects consistent with Regional and State Water Plan
- Support strong groundwater districts to manage resource
- Decisions based on sound science and technical work
- Long-term investment
- Water Quality protection is key

© Susan Butler 11

## Groundwater Program

- Edwards Program
  - Lease
  - Purchase: Land with water or water only
  - Agricultural Conservation
- Aquifer Storage and Recovery Program
- Regional Carrizo
- Simsboro Project
- Conjunctive Use Projects

© Susan Butler 12



## Key Contract Provisions

- Fair Price
- Ownership/Long-Term Production rights
- Ownership of Facilities
- “Sustainable” Production
- Feasibility/Due Diligence Period
  - Test Drilling
- Exclusivity Provisions


© Susan Butler 13



## Key Contract Provisions (continued)

- Minimum Production/Minimum Payment Provisions
- Annual Payments
- Easements
- Term/Termination

© Susan Butler 14



## Landowner & Citizen Information on Groundwater Seminar

April 1, 2004

© Susan Butler 15